

The Need For Every  
Process Industry

**SPINK CONTROLS**

®

An ISO 9001:2015 Certified Company



## REFLEX LEVEL GAUGE

**MODEL: SC / L - 201**

**LEVEL**

# REFLEX LEVEL GAUGE

MODEL : SC / L - 201



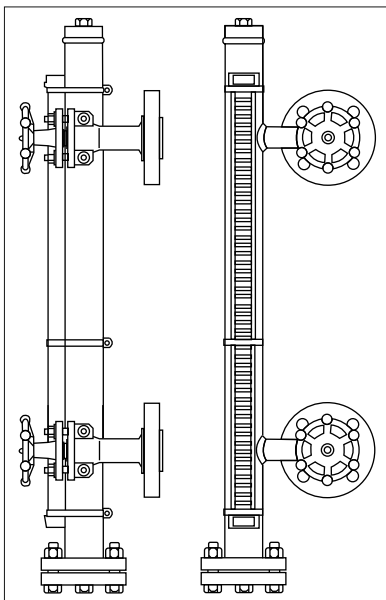
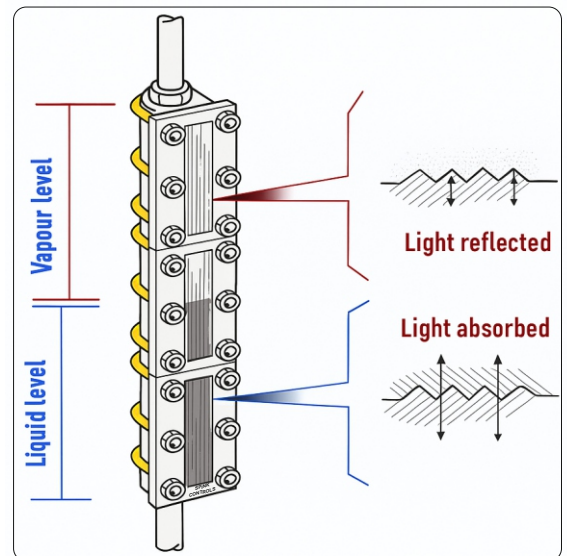
A Reflex level gauge is highly recommended for colorless liquids. They are used in applications involving high temperatures, pressure conditions, and the corrosive nature of fluids.

Reflex & transparent level gauges are preferred due to their ruggedness, sturdiness and low initial costs.

The industries dealing with the materials that are highly toxic and inflammable, and are used under high pressures and temperatures. The Reflex Level Gauge is one mechanism that is extremely suitable for this industry.

## PRINCIPLE OF OPERATIONS

Reflex level gauges are designed to detect the difference in refractive index of vapor and liquid and level detection and can be used in a number of process applications. This glass is flat on the outside and on the inside has a series of prism grooves that face the vapor and liquid space.



## ENGINEERING SPECIFICATION

PROCESS CONNECTION	: REAR
ORIENTATION	
DRAIN	: ½" NPT GLOBE OR GATE OR NEEDLE VALVE
VENT	: ½" NPT PLUG
CC DISTANCE	: 1000 mm (OTHER ON REQUEST)
TEMPERATURE RATING	: 243 °C
PRESSURE RATING	: 64 kg/cm <sup>2</sup> -g

## MODEL SELECTION

Suffix Code	1	2	3	4	5	6	7	8	9	10	11	12	13	Parameters
Model	SC/L-201													Reflex Level Gauge
Gauge		GP4												Toughened Borosilicate 30W
		GP5												Toughened Borosilicate 34W
		GP6												Other
Body MOC			S4											SS304
			S6											SS316
			MS											Mild steel
Connection				F										Flanged
				S										Screwed
				T										Thread
Process Connection size					P1									20 NB
					P2									25 NB
					P3									40 NB
Rating						A								150# RF
						B								300# RF
						C								600# RF
Process Connection-MOC							CS							CS
							A5							CS A105
							S4							SS 304
							S6							SS 316
Cover Plate -MOC								CP1						SS304
								CP2						SS316
								CP3						Mild steel
Gasket									G1					CAF
									G2					Graphoil SS304
									G3					Graphoil SS316
									G4					PTFE
Isolation Valve MOC										IV1				ASTM A105
										IV2				SS316
										IV3				Offset Needle Valve
Vent / Drain											VD1			1/2' NPT Plug / 1/2"NPT Globe Valve
											VD2			1/2' NPT Plug/ 1/2"NPT Gate Valve
											VD3			1/2' NPT Plug/ 1/2"NPT Needle Valve
Scale												S1		Aluminum
												S2		Stainless steel
C/C Distance													XX	Upto 1000 mm (Other on request)



Head Office	Plant
303, SIDDHARTH TOWER, G.P. PAI ROAD, KOPRI, THANE(E) - 400 603 MAHARASHTRA, INDIA Fax : +91 22 2532 4845 Phone : +91 22 2532 8223 +91 22 2532 8224 Email : info@spinkcontrolsindia.com	GALA No. F-4 A WING, UDYOG BHAVAN-2 ADDITIONAL AMBERNATH, INDUSTRIAL AREA, ANAND NAGAR MIDC AMBERNATH, Dist - THANE 421501 Phone : +91 9594991196 Email : rupa.thakkar@spinkcontrols.com

