



The Need For Every
Process Industry



PURGE ROTAMETER

MODEL: SC / R - 400

FLOW

PURGE ROTAMETER

MODEL : SC / R - 400

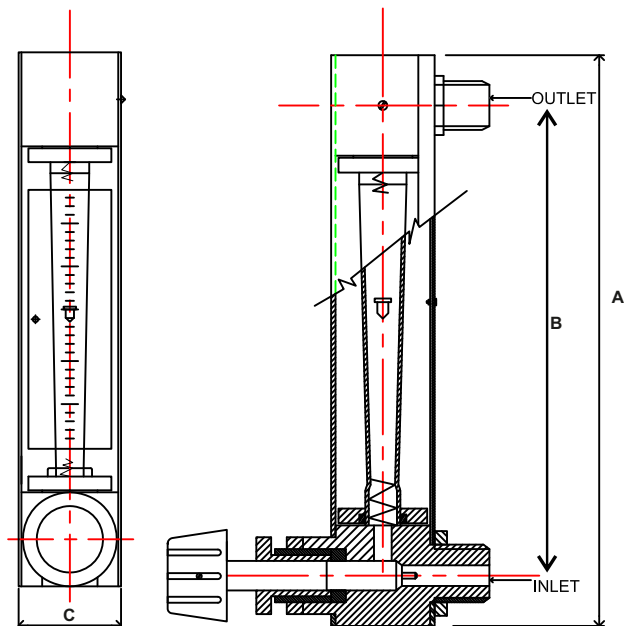


A Purge Rotameter with a Differential Pressure (DP) regulator is a precision device for measuring low flow rates in gases or liquids. The rotameter stabilizes and indicates flow rate using a float in a calibrated tube, while the DP regulator ensures accuracy by maintaining a consistent pressure, even with upstream or downstream fluctuations. This combination offers reliable, stable readings in sensitive applications.

ENGINEERING SPECIFICATION

ACCURACY	: $\pm 3\%$ of FSR.
RANGEABILITY	: 10:1
REPEATABILITY	: $\pm 0.5\%$ of FSR
MAX TEMPERATURE	: 120°C.
MAX PRESSURE	: 10kg/cm ² (HIGH PRESSURE ON REQUEST)
CONNECTION	: 1/4" BSP (M/F) OTHERS ON REQUEST
DIRECTION OF CONNECTION	: REAR BOTTOM TO TOP

MATERIAL OF CONSTRUCTION	: SS 316
PACKING / GASKETS	: NEOPRENE / SILICON / VITON / PTFE
COVER	: ACRYLIC / POLY CARBONATE
ACCESSORIES	: 1) DIFFERENTIAL PRESSURE REGULATOR 2) HIGH & LOW FLOW ALARMS 3) NEEDLE VALVE



MEASURING RANGE

Model	Dimension				Water Flow @ 20°C (LPH)	Air @ 20°C (LPH)	Code	Float No.	Tube No.
	A (mm)	B (mm)	C (mm)	Scale Length (mm)					
R-401	182	155	32	100	0.05-0.5	2-20	1A	1A	T1A
					0.08-0.8	3-30	1B	1B	T1B
					0.1-1	4-40	1C	1C	T1C
					0.2-2.0	8-80	2A	2A	T2A
					0.3-3.0	12-120	2B	2B	T2B
					0.4-4.0	16-160	2C	2C	T2C
					0.5-5.0	20-200	2D	2D	T2D
R-402	232	205	32	170	0.4-4.0	16-160	3A	3A	T3A
					0.5-5.0	20-200	3B	3B	T3B
					0.8-8.0	32-320	3C	3C	T3C
					1-10	40-400	3D	3D	T3D
					0.16-16	64-640	3E	3E	T3E
					2-20	80-800	3F	3F	T3F
					3-30	120-1200	3G	3G	T3G

MODEL CODING

Suffix Code	1	2	3	4	5	6	7	8	9	10	Parameters
Model	SC/R-401										Refer Dimensional chart
	SC/R-402										
Line size		XX									Refer Flow Chart
Fluid			L								Liquid
			G								Gas
Mesuring Range				XX							Flow chart
Flow Direction					A						Vertical
					B						Rear
Connection						S					Screwed
						H					Hose
						F					Flanged
MOC						M1					SS304
						M2					SS316
Elastomer							E1				PTFE
							E2				Silicon
							E3				Neoprene
							E4				Viton
Optional								FSV			Flow Switch (Proximity) High & Low Only
								NV			Needle Valve
								DPR			Differential Pressure Regulator
								XX			None
Cover Plate - MOC									CP4		Acrylic
									CP5		Poly Carbonate



Head Office

303, SIDDHARTH TOWER, G.P. PAI ROAD, KOPRI, THANE (E) - 400603 MAHARASHTRA, INDIA
 Phone : +91 22 2532 8223
 +91 22 2532 8224
 Email : info@spinkcontrolsindia.com

Plant 1

GALA No. F-4 A WING, UDYOG BHAVAN-2 ADDITIONAL AMBERNATH, INDUSTRIAL AREA, ANAND NAGAR MIDC AMBERNATH, THANE 421501
 Phone : +91 9594991196
 Email : rupa.thakkar@spinkcontrols.com

Plant 2

PLOT No.: MS 114/115, AMBERNATH INDUSTRIAL AREA, CHIKHLOLI MIDC, AMBERNATH (W) THANE 421501
 Phone : +91 7400159593
 Email : avanti.rangdal@spinkcontrols.com

