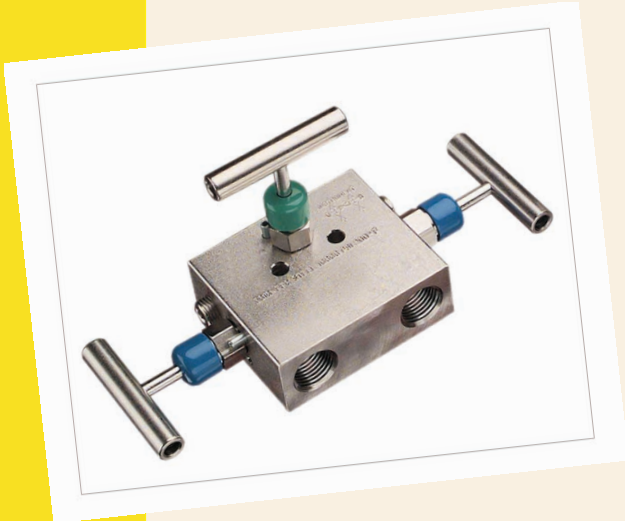


S Type 3 Way Manifold

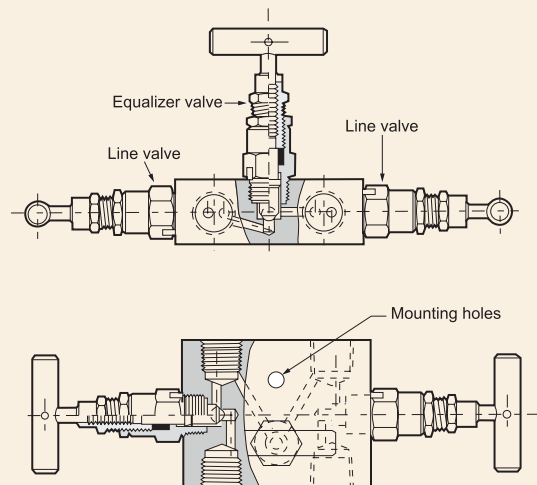
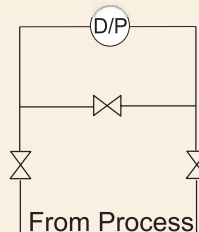
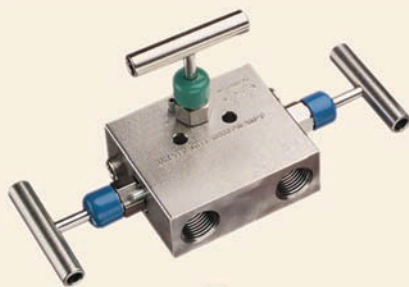


Specifications:

Max.Working Pressure	6000PSI/400Bar
Max.Working Temperature	200° C
Material of Constructions	SS/CS
Process Connections	½ " NPT (F)
Instrument Connections	½ " NPT (F)
Vent Port	¼ " NPT (F)
Gland Packing	PTFE

Applications:

This type of manifold is used for Differential pressure application such as D.P.Transmitter, Pressure Gauges, Pressure Switches etc. It is remotely mounted.



SPINK CONTROLS®

Phone:91-22-2532 8223/24 Email:info@spinkcontrolsindia.com
www.spinkcontrolsindia.com

1A, VILAS APPT, SANT TUKARAM PATH,
KOPRI, THANE (E) 400 603, MAHARASHTRA